

Absentee Voting in Alabama

Here's what you need to know about absentee voting in Alabama. If you need help voting absentee, please call ADAP using the phone number on the back of this page.

What is an absentee ballot?

An absentee ballot is a **ballot you can fill out at home** and mail in instead of going to the polls on Election Day.

Why do people use absentee ballots?

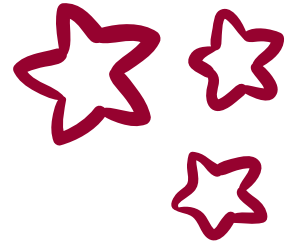
There are **lots of reasons** why people choose to vote absentee! You might not be in your county on Election Day, or maybe going to the polls will be difficult for you because of a disability.

Who can use absentee ballots?

In Alabama, people are only allowed to vote with an absentee ballot in **certain situations**. You are allowed to vote absentee in Alabama if:

- You **will not be in your home county** on Election Day
- You have a **physical disability** and cannot travel to your polling place
- You **do not live in the county** you are registered to vote in
- You are a **caregiver** for someone who is confined to their home

How to Vote Absentee



1 Get an Application

Visit the Alabama Secretary of State's office at <https://www.sos.alabama.gov/alabama-votes/absentee-ballot-applications>.

Select the application for the county where you are registered to vote.

Print out your county's application. **If you do not have a printer**, you can request an application from your county's Board of Registrars.

2 Submit Your Application

Fill out the information requested in the application. **You are allowed to get help** if you need assistance filling out your application.

Mail your application to your county's Board of Registrars. The mailing address is printed on your application.

3 VOTE!

If your application is approved, you will receive an absentee ballot in the mail.

Fill in the information requested and completely fill in the bubble next to the person you want to vote for.

Mail your completed ballot to your Board of Registrars office **more than 5 days before Election Day**.

If you need help filling out or mailing your ballot, **a loved one is allowed to help you**.



Alabama Disabilities Advocacy Program

205-348-4928